

Charts to Know

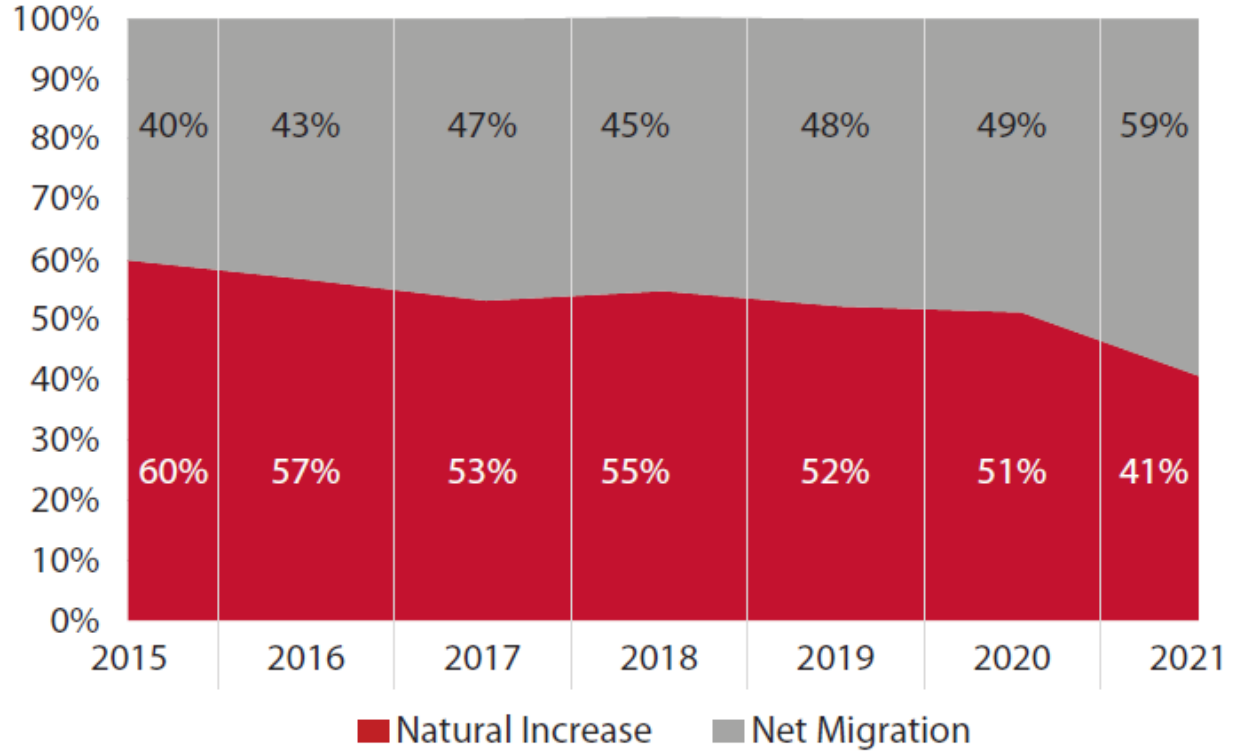
Newsmaker Breakfast

January 12, 2022



Net Migration Surpasses Natural Increase

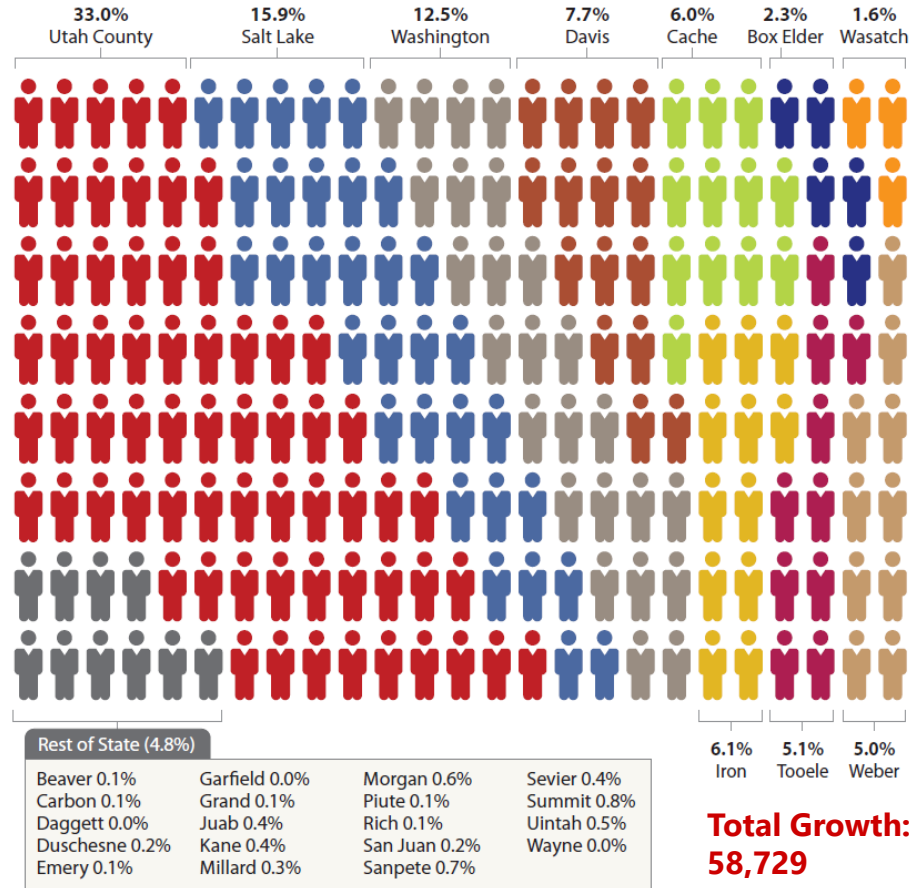
State Net Migration and Natural Increase Share of Population Growth, 2015-2021



Source: Utah Population Committee, Kem C. Gardner Policy Institute

One-third of growth in Utah between 2020 and 2021 was in Utah County

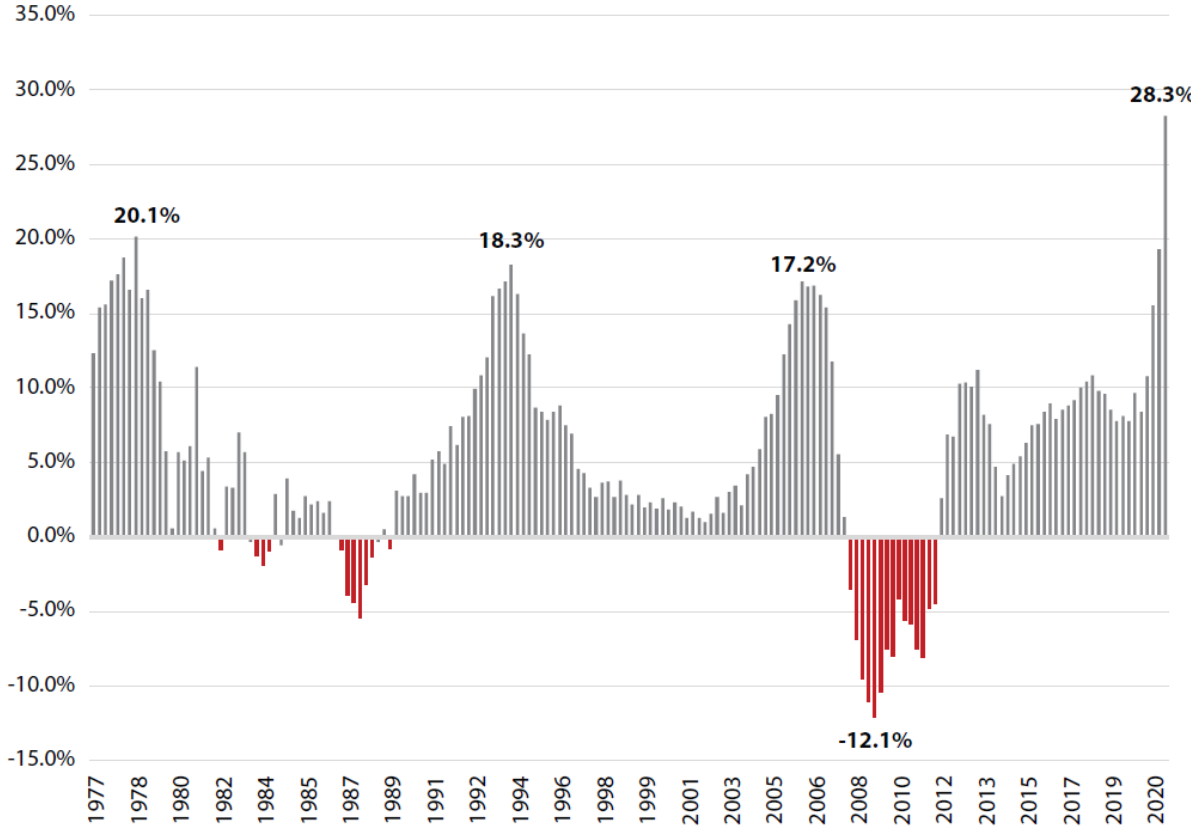
County share of state population growth, 2020-2021



Source: Kem C. Gardner Policy Institute

A long housing-price appreciation cycle

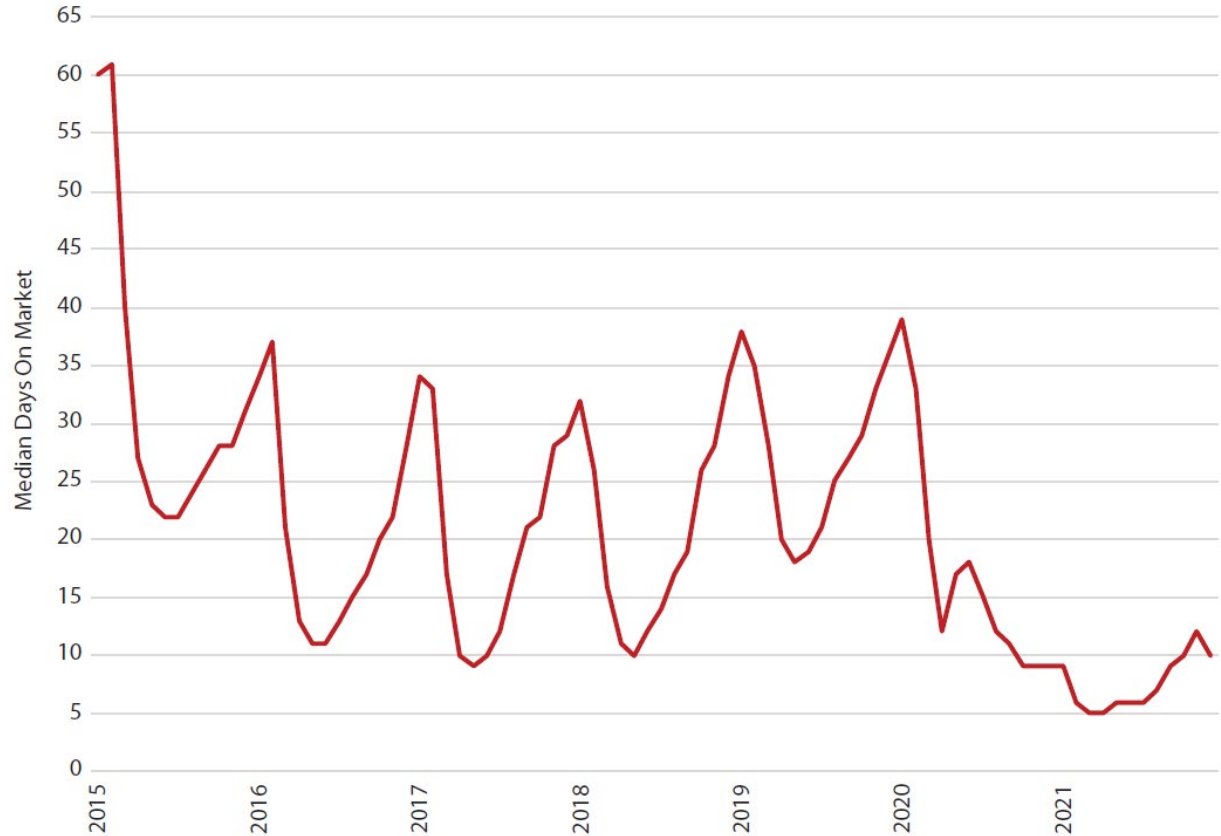
Year-Over Quarterly Percent Change in Utah's Housing Price Index, 1Q 1977–2Q 2021 (single-family homes)



Source: Federal Housing Finance Agency Housing Price Index

No time to think about it

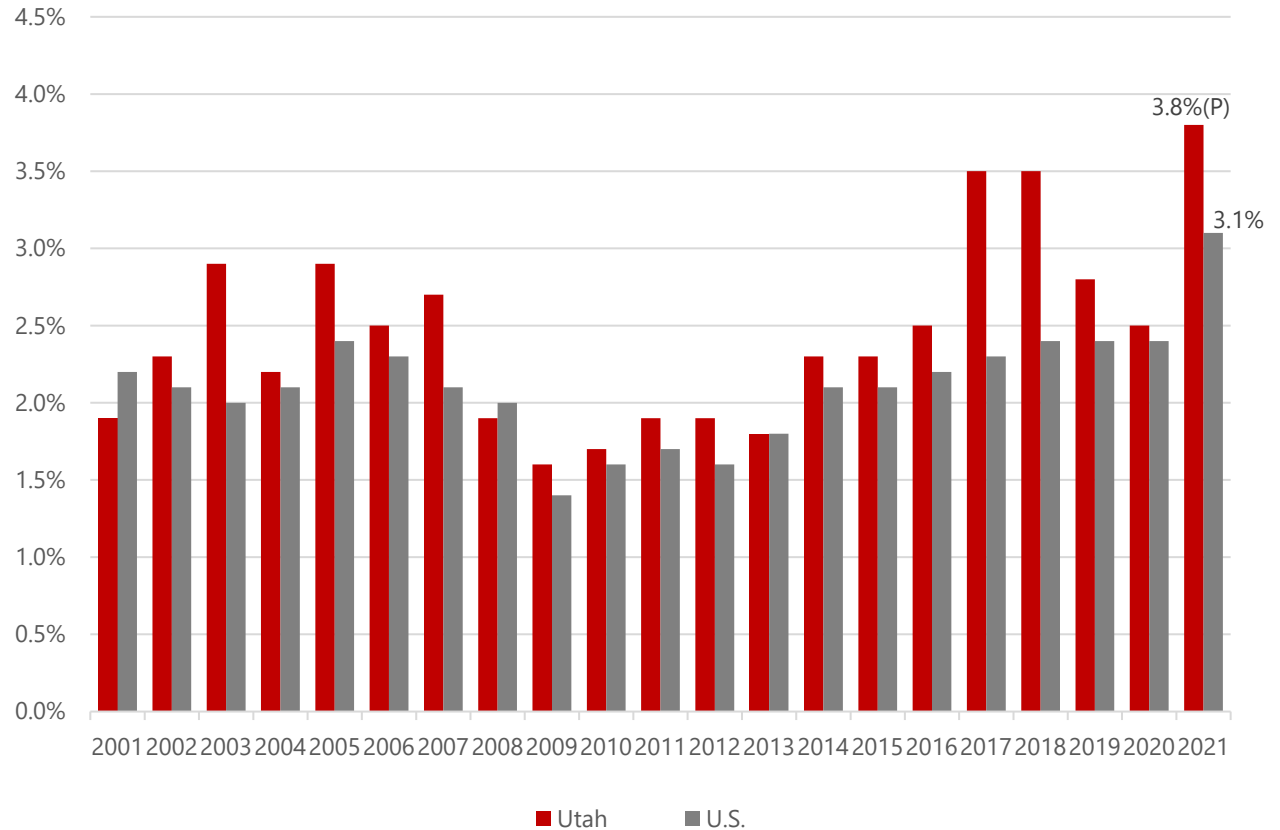
Median days on market in Utah, January 2015 - September 2021



Source: UtahRealEstate.com

Utah's Great Resignation

Share of employees quitting their job in September of each year, 2001–2021

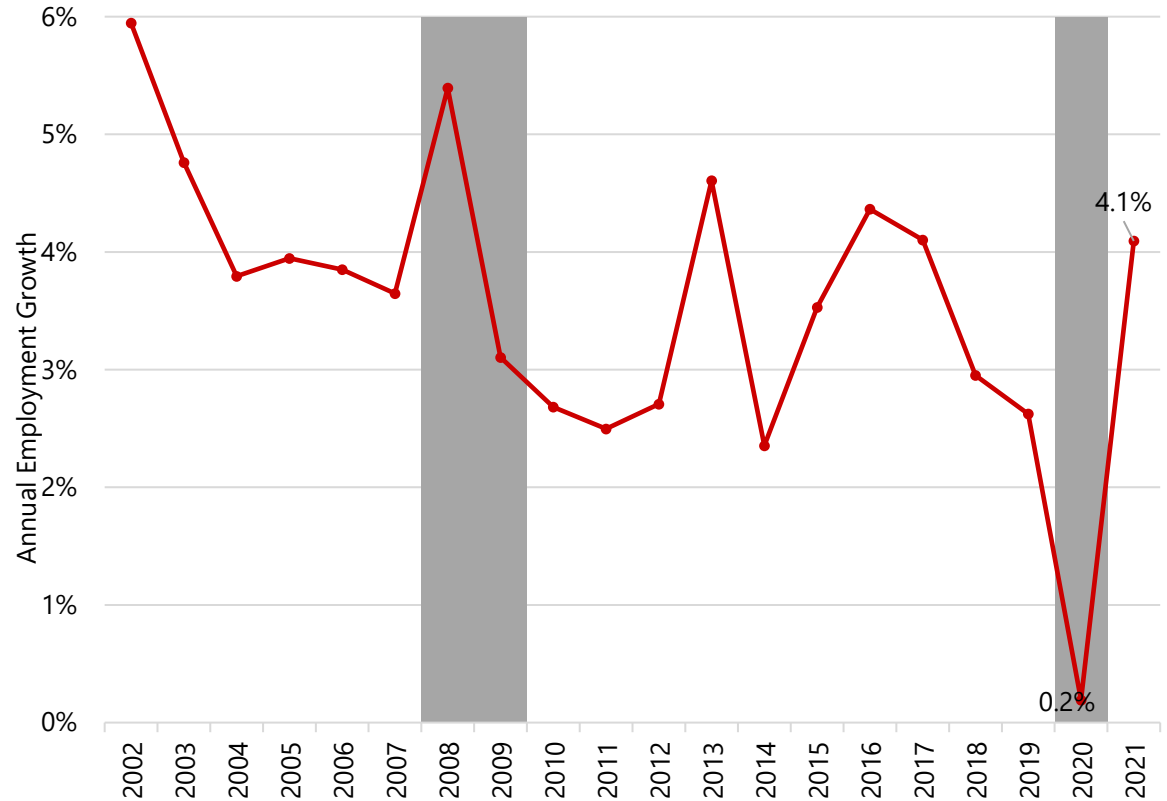


Source: U.S. Bureau of Labor Statistics Job Openings and Labor Turnover Survey

The impact of COVID-19 on health care employment seems to be lessening

Change in Average Employment in Utah's Health Care and Social Assistance Industry for the First Half of Each Year, 2002–2021

Note: The health care and social assistance sector comprises establishments providing health care and social assistance for individuals. Establishments in this sector deliver services by trained professionals. NBER-dated recessions in gray.

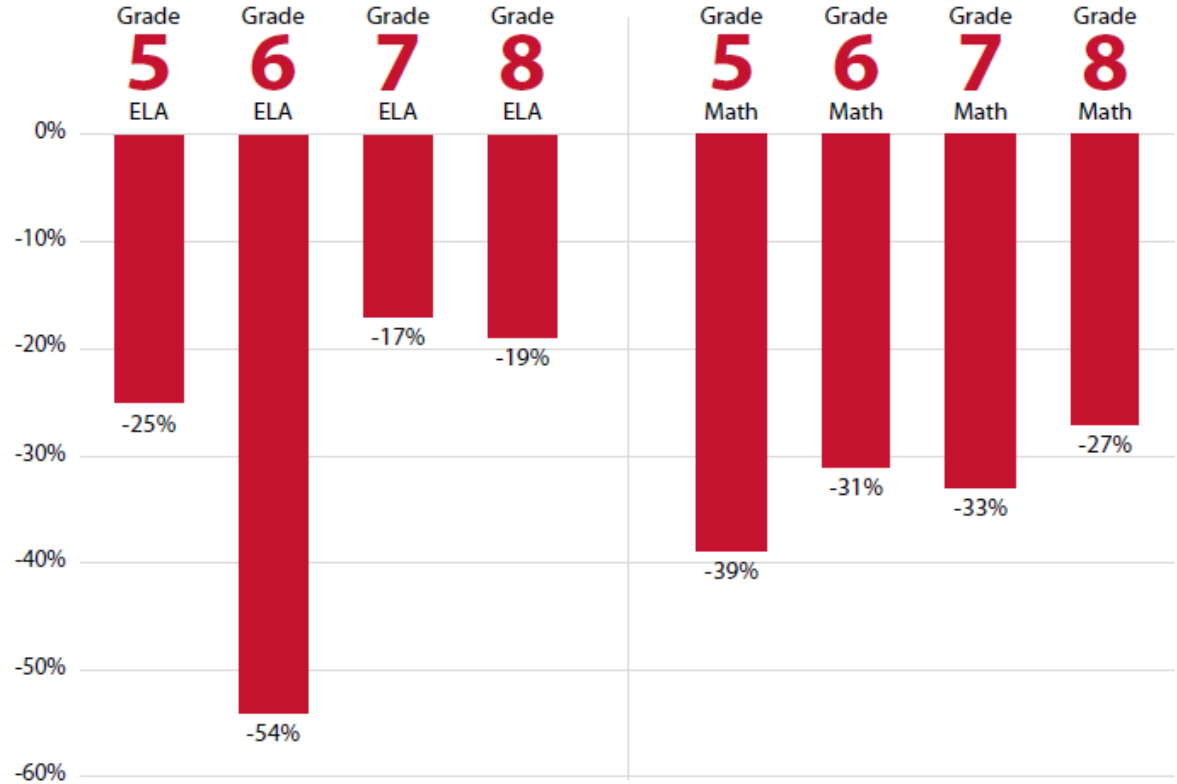


Source: Kem C. Gardner Policy Institute analysis of Utah Department of Workforce Services data and Federal Reserve Bank of St. Louis.

Unintended consequences from the pandemic

Change in RISE standardized test performance in Utah, 2018-2019 vs. 2020-2021

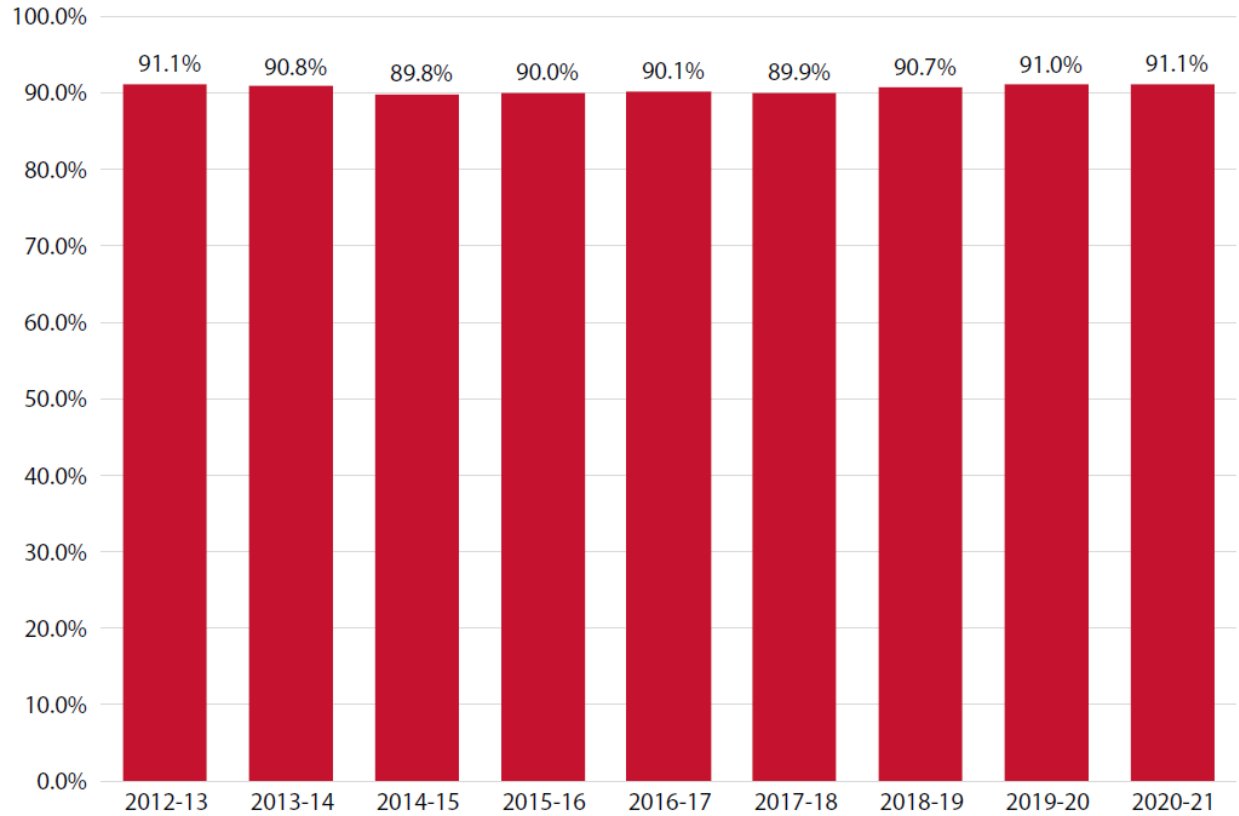
Note: These are estimates based on students who tested in 2020-2021 compared to a similar demographic group tested in 2018-2019.



Source: Utah State Board of Education and The National Center for the Improvement of Education Assessment, Inc.

Utah teachers persevere

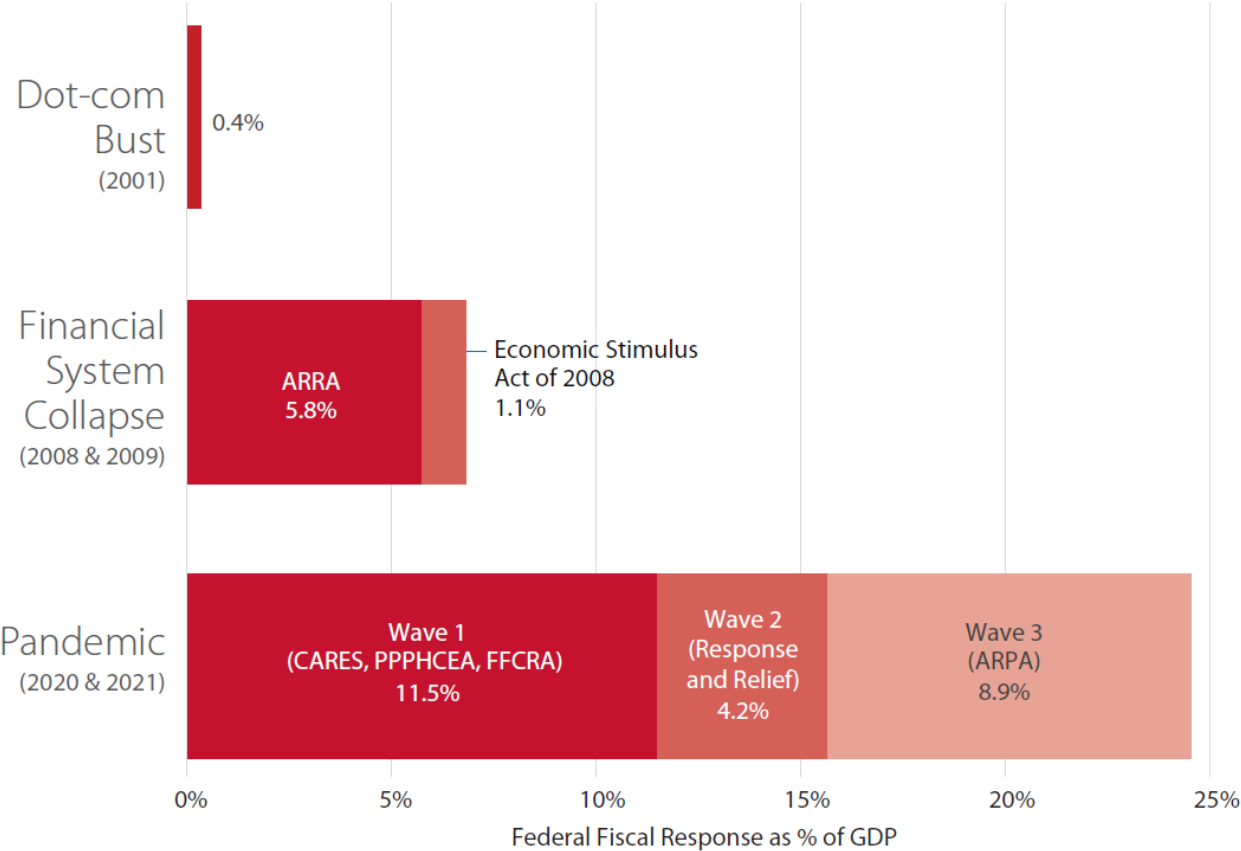
Share of Utah teachers returning to education 2012–2021



Source: Utah State Board of Education

The pandemic era of big government

Federal fiscal response to recent recessions as percent of GDP



Source: Congressional Budget Office and National Bureau of Economic Research

Words and phrases to know in 2022

Be 22% better – To increase the good qualities of; make better; improve. *In honor of University of Utah football players, Aaron Lowe and Ty Jordan, we should all seek to be 22% better.*

Kem C. Gardner Policy Institute

Thomas S. Monson Center | 411 E. South Temple Street
Salt Lake City, UT 84111 | 801-585-5618 | gardner.utah.edu

DAVID ECCLES SCHOOL OF BUSINESS
UNIVERSITY OF UTAH

