

Utah Demographics

Utah is well-known for its signature demographics, which include the youngest population, largest household sizes, and among the most rapidly growing populations compared to other states. However we are following many of the trends of the nation with an increasing median age, greater ethnic diversity, and shrinking household sizes. Utah reached the 3 million person milestone in 2015. The following document provides some of the most requested demographic information about the State of Utah.

Utah's Total Population

- **2,995,919** – Utah's total population as of July 1, 2015
- **Fifth fastest** – Utah experienced the fifth fastest population growth rate in the nation since the 2010 Census, adding an estimated 232,034 people as of July 1, 2015.
- **Fastest-growing states in the nation** – The fastest growing states since the 2010 Census include the following:

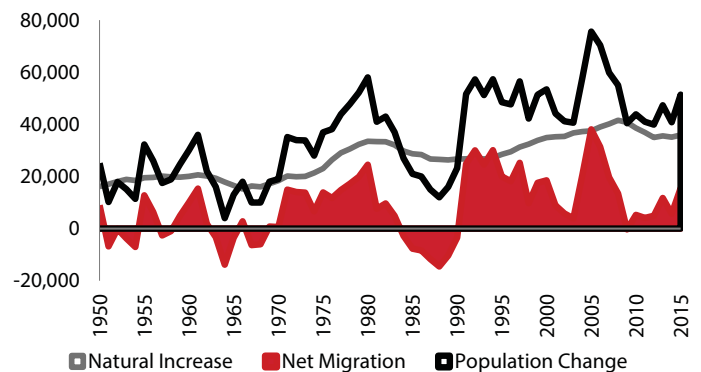
North Dakota	12.5%	Florida	7.8%
District of Columbia	11.7%	Nevada	7.0%
Texas	9.2%	Arizona	6.8%
Colorado	8.5%	Washington	6.6%
Utah	8.4%	South Dakota	5.9%

Source: U.S. Census Bureau, Population Estimates

How Utah Grows

- **Natural increase** – From 1990 to 2010, approximately two-thirds of Utah's growth can be attributed to natural increase (births minus deaths). While Utah births have declined from a high in 2008, Utah continues to have the highest fertility rate in the nation.
- **Migration** – Approximately one-third of Utah's growth from 1990 to 2010 occurred because of net in-migration.
- **Down to the minute** – From April 1, 2010 to July 1, 2015, Utah's population increased by approximately

Utah Components of Population Change



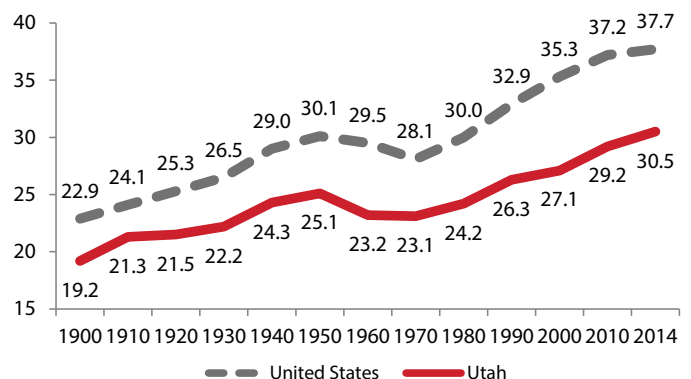
Sources: Utah Population Estimates Committee (1950 -2009); U.S. Census Bureau, Population Estimates (2010-2015)

one person every 12 minutes. A baby was born every 10 minutes, someone died every 34 minutes, and someone moved into the state every 64 minutes.

Distinctive Demographic Profile

- **Young** – Utah has the lowest median age in the country at 30.5 in 2014, compared to 37.7 nationally. Like the nation, median age is increasing. Children under 18 years comprise 30.7 percent of Utah's total population in 2014, the highest in the country. The national share is 23.1 percent.

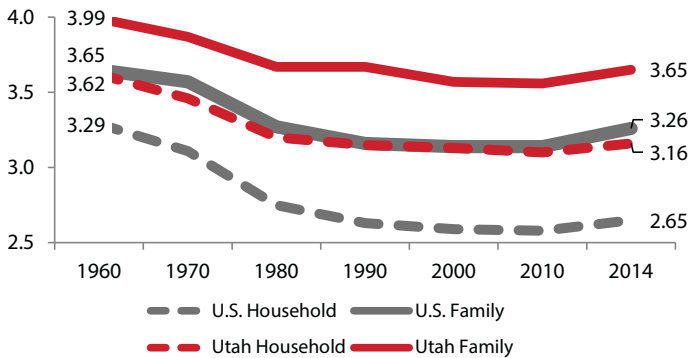
Median Age



Source: U.S. Census Bureau, Decennial Census; 2014 American Community Survey

- **Large household size** – Utah has the largest household size in the country at 3.16 persons per household in 2014 compared to 2.65 nationally. Both are trending down since 1960.

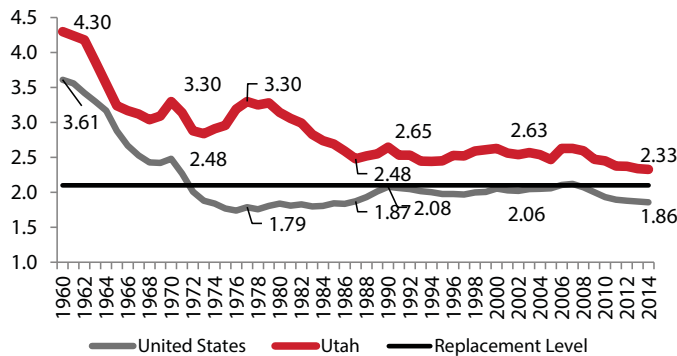
Average Household and Family Size



Sources: U.S. Census Bureau, Decennial Census; 2014 American Community Survey

- **Fertility rate** – Utah has the highest fertility rate in the country at 2.33 births per woman in 2014 compared to 1.86 nationally. These rates have declined significantly since 1960.

Total Fertility Rate



Note: The Replacement Level is the fertility level (2.1) at which the current population is replaced.

Source: National Center for Health Statistics

County Population

- **Fastest-growing Utah counties** – The fastest growing counties from the 2010 Census to July 1, 2014 include the following:

Wasatch County	17.8%	Utah County	8.6%
Uintah County	13.1%	Summit County	7.7%
Morgan County	12.0%	Davis County	7.6%
Washington County	10.0%	Salt Lake County	6.0%
Duchesne County	9.5%	Tooele County	5.8%

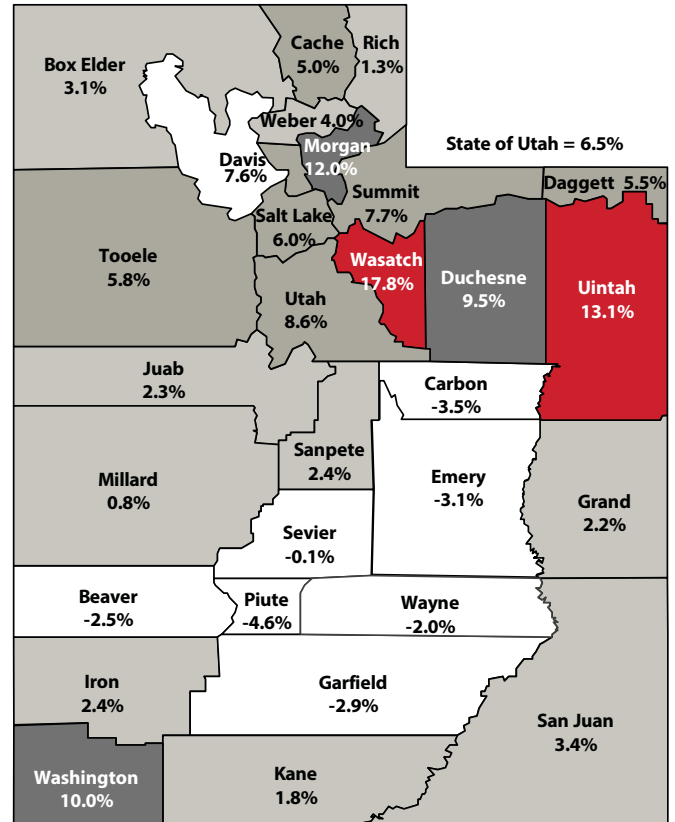
Source: U.S. Census Bureau, Population Estimates

- **Largest Utah counties**—The largest counties as of July 1, 2014 include the following:

Salt Lake County	1,091,742	Cache County	118,343
Utah County	560,974	Tooele County	61,598
Davis County	329,692	Box Elder County	51,518
Weber County	240,475	Iron County	47,269
Washington County	151,948	Summit County	39,105

Source: U.S. Census Bureau, Population Estimates

Utah Population Growth Rates by County: April 1, 2010 to July 1, 2014



Source: U.S. Census Bureau

City Population

- **Fastest-growing Utah cities** – The fastest growing cities of 5,000 or more from the 2010 Census to July 1, 2014 include the following:

Saratoga Springs, Utah County	37.0%
Herriman, Salt Lake County	31.1%
Bluffdale, Salt Lake County	30.1%
South Jordan, Salt Lake County	24.5%
Washington, Washington County	24.5%
Farmington, Davis County	21.3%
Heber, Wasatch County	19.7%
Eagle Mountain, Utah County	19.5%
North Logan, Cache County	19.4%
Vernal, Uintah County	19.3%

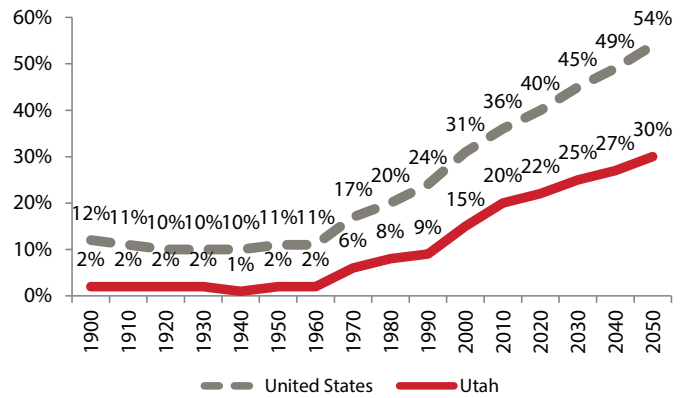
Source: U.S. Census Bureau, Population Estimates

- **Largest Utah cities** – The largest cities as of July 1, 2014 include the following:

Salt Lake City, Salt Lake County	190,884
West Valley City, Salt Lake County	134,495
Provo, Utah County	114,801
West Jordan, Salt Lake County	110,920
Orem, Utah County	91,781
Sandy, Salt Lake County	91,148
Ogden, Weber County	84,316
St. George, Washington County	78,505
Layton, Davis County	72,231
South Jordan, Salt Lake County	62,781

Source: U.S. Census Bureau, Population Estimates

Minorities as a Share of the Population



Note: Minority includes all races and ethnicities except white alone not Hispanic or Latino.

Sources: U.S. Census Bureau, Population Estimates and national projections; Utah projections: Kem C. Gardner Policy Institute

An urban state—Utah has the 9th highest urban population in the nation at 90.6 percent, meaning that the population is concentrated in urban areas. Maine is the least urban state with 38.7 percent.

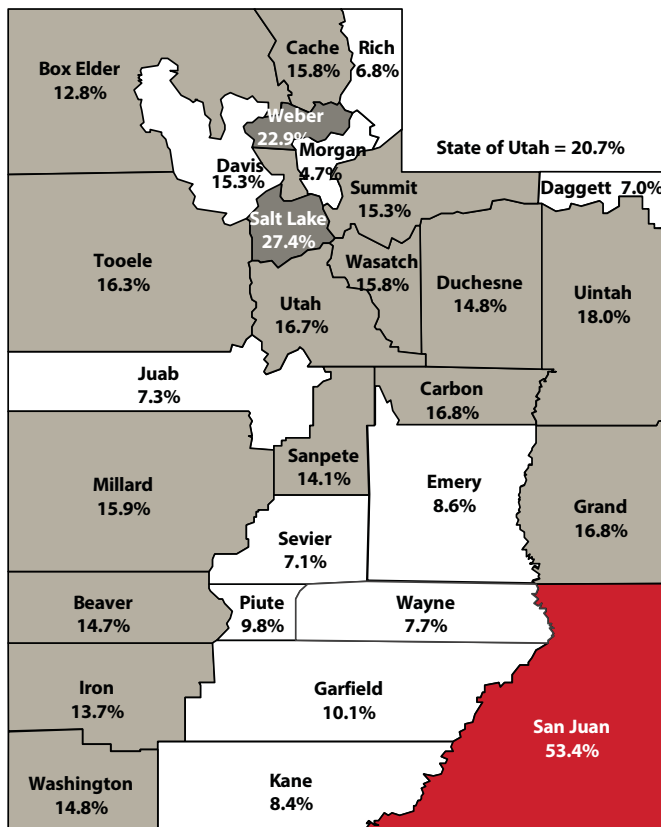
- An area is considered urban if the core census block groups or blocks have a population density of at least 1,000 people per square mile and the surrounding census blocks have an overall density of at least 500 people per square mile.
- Over 75 percent of the population in Utah is concentrated in the four counties along the Wasatch Front: Salt Lake, Utah, Davis, and Weber.
- The most urban states in the nation include the following:

District of Columbia	100.0%	Hawaii	91.9%
California	95.0%	Florida	91.2%
New Jersey	94.7%	Rhode Island	90.7%
Nevada	94.2%	Utah	90.6%
Massachusetts	92.0%	Arizona	89.9%

Source: U.S. Census Bureau, Population Estimates

Race and Ethnicity—Utah's population continues to become more diverse.

Minority Share of Population: July 1, 2014



Note: Minority includes all races and ethnicities except white alone not Hispanic or Latino.

Source: U.S. Census Bureau, Population Estimates

About DemographyUTAH

DemographyUTAH at the Kem C. Gardner Policy Institute provides demographic expertise to support informed decision making. We are home to the U.S. Census Bureau State Data Center Program and have produced a series of demographic papers and monographs. Our expanding research program includes demographic modeling and analysis for use in population estimation and long term projections. With a deep understanding of Utah demographics, the Kem C. Gardner Policy Institute helps advance a stronger and more prosperous Utah economy. For additional information, please visit gardner.utah.edu/utah-demographics or contact Effie Van Noy, Utah State Data Center Coordinator, at effie.johnson@utah.edu or (801) 587-9224.

Updated February 9, 2016