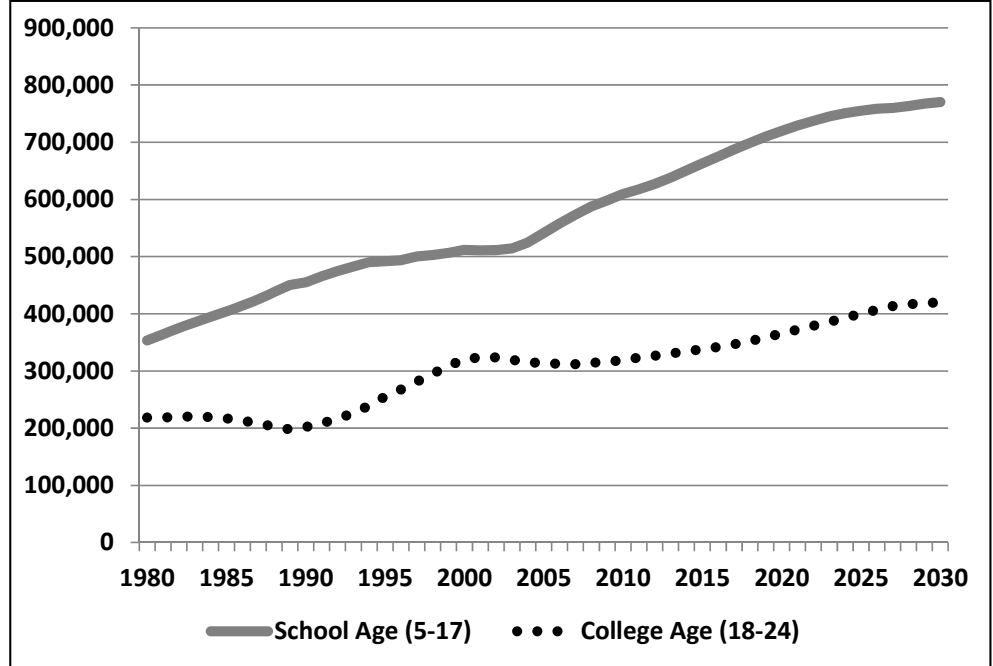




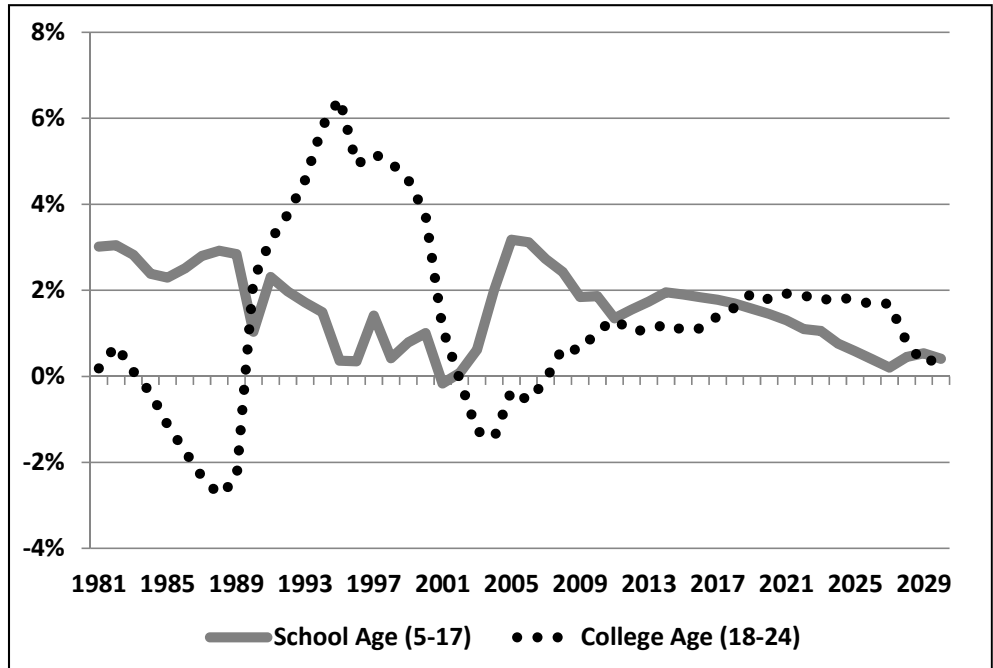
BRIEF: SCHOOL AGE POPULATION

School Age (5-17) and College Age (18-24) July 1 Population Estimates and Projections

Year	School Age (5-17)		College Age (18-24)	
	Estimate	% Change	Estimate	% Change
1980	353,265		218,208	
1981	363,907	3.0%	218,604	0.2%
1982	374,998	3.0%	220,171	0.7%
1983	385,590	2.8%	220,427	0.1%
1984	394,783	2.4%	219,573	-0.4%
1985	403,848	2.3%	217,108	-1.1%
1986	413,958	2.5%	213,344	-1.7%
1987	425,554	2.8%	208,369	-2.3%
1988	437,980	2.9%	202,614	-2.8%
1989	450,435	2.8%	197,783	-2.4%
1990	455,112	1.0%	202,211	2.2%
1991	465,606	2.3%	208,615	3.2%
1992	474,772	2.0%	216,482	3.8%
1993	482,928	1.7%	226,363	4.6%
1994	490,109	1.5%	239,511	5.8%
1995	491,878	0.4%	254,968	6.5%
1996	493,604	0.4%	267,527	4.9%
1997	500,559	1.4%	281,368	5.2%
1998	502,656	0.4%	295,350	5.0%
1999	506,607	0.8%	308,844	4.6%
2000	511,683	1.0%	320,435	3.8%
2001	510,852	-0.2%	324,024	1.1%
2002	511,245	0.1%	323,802	-0.1%
2003	514,405	0.6%	319,693	-1.3%
2004	524,740	2.0%	315,118	-1.4%
2005	541,391	3.2%	314,070	-0.3%
2006	558,265	3.1%	312,295	-0.6%
2007	573,502	2.7%	311,990	-0.1%
2008	587,414	2.4%	314,091	0.7%
2009	598,252	1.8%	315,979	0.6%
2010	609,413	1.9%	319,294	1.0%
2011	617,629	1.3%	323,507	1.3%
2012	627,224	1.6%	326,914	1.1%
2013	638,113	1.7%	330,418	1.1%
2014	650,579	2.0%	334,426	1.2%
2015	662,938	1.9%	338,031	1.1%
2016	675,134	1.8%	341,797	1.1%
2017	687,144	1.8%	346,590	1.4%
2018	698,754	1.7%	352,122	1.6%
2019	709,715	1.6%	358,938	1.9%
2020	719,997	1.4%	365,354	1.8%
2021	729,378	1.3%	372,380	1.9%
2022	737,395	1.1%	379,396	1.9%
2023	745,192	1.1%	386,069	1.8%
2024	750,889	0.8%	393,179	1.8%
2025	755,276	0.6%	400,143	1.8%
2026	758,248	0.4%	406,852	1.7%
2027	759,810	0.2%	413,733	1.7%
2028	763,249	0.5%	417,004	0.8%
2029	767,313	0.5%	418,248	0.3%
2030	770,425	0.4%	420,130	0.4%



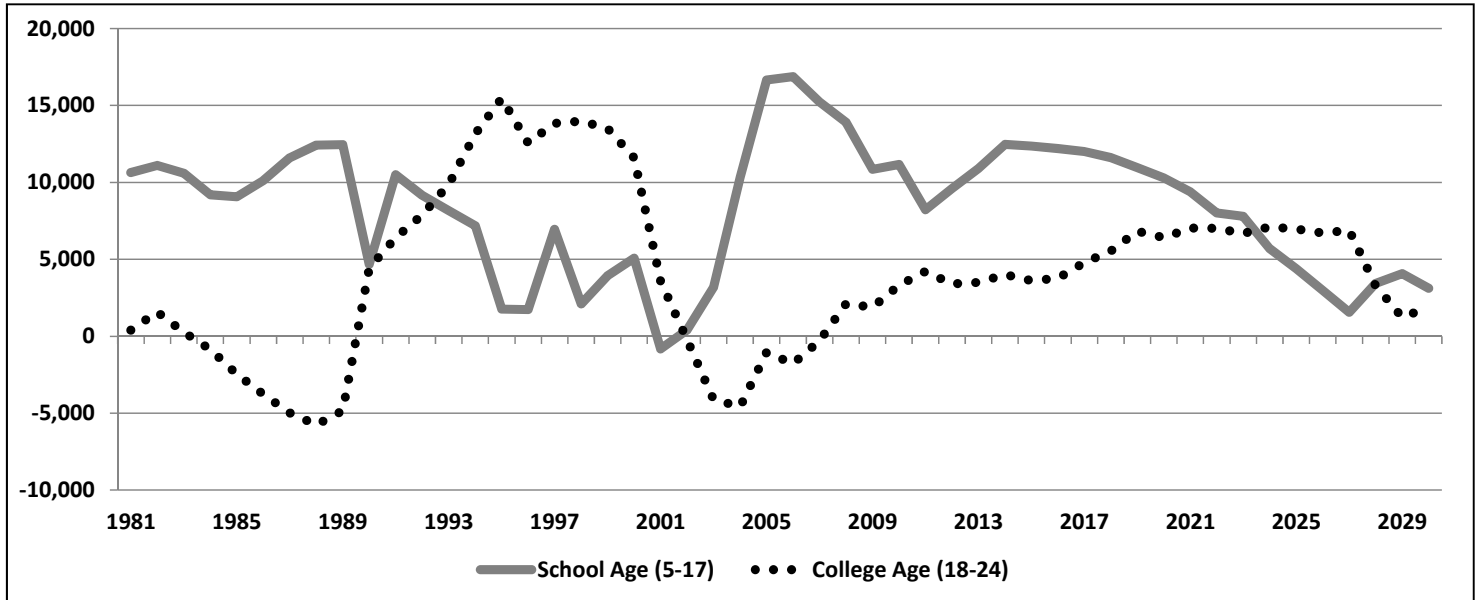
School Age (5-17) and College Age (18-24) July 1 Population Estimates and Projections: Annual Percent Change



Sources:
 1980 to 1989: Perlich and Reeve, "The Coming Boom in Utah's School Age and College Age Populations," Utah Economic and Business Review, 2002
 1990 to 2060: Governor's Office of Management and Budget, 2012 Baseline Projections

BRIEF: SCHOOL AGE POPULATION

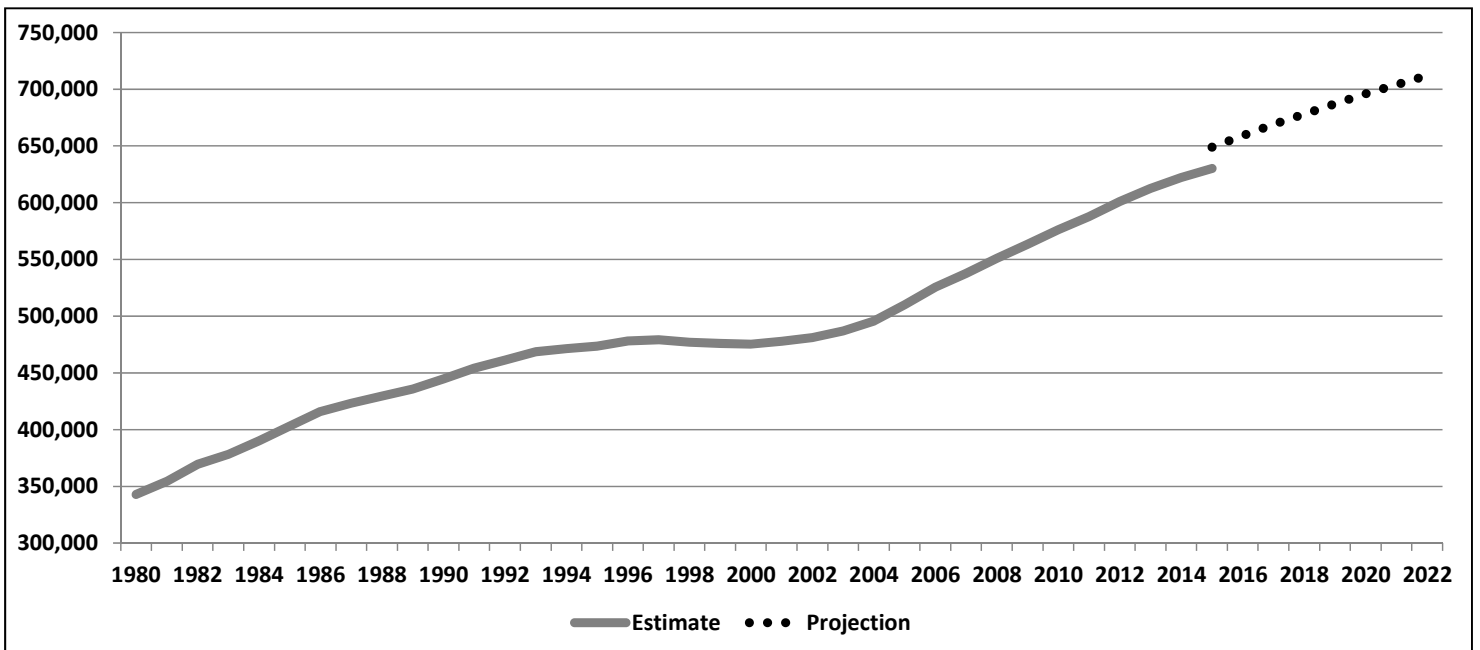
School Age (5-17) and College Age (18-24) July 1 Population Estimates and Projections:
Annual Numeric Change



Sources:

1980 to 1989: Perlich and Reeve, "The Coming Boom in Utah's School Age and College Age Populations," Utah Economic and Business Review, 2002
1990 to 2060: Governor's Office of Management and Budget, 2012 Baseline Projections

Public School Enrollment (5-17)



Sources:

1980 to 2015: Utah State Office of Education, School Enrollment Counts
2016 to 2022: U.S. Department of Education, National Center for Education Statistics

Contact: Effie Johnson Van Noy, effie.johnson@utah.edu