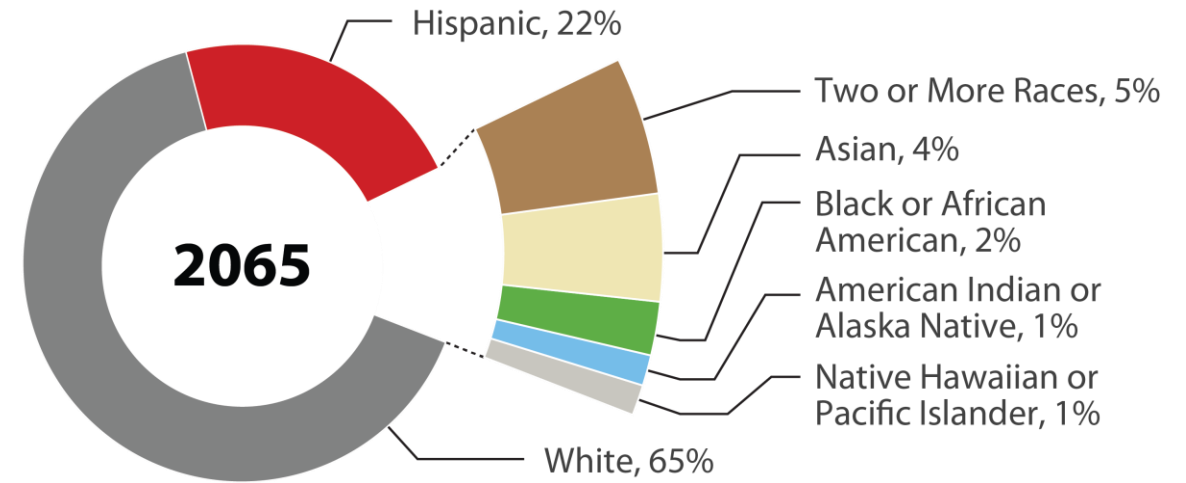
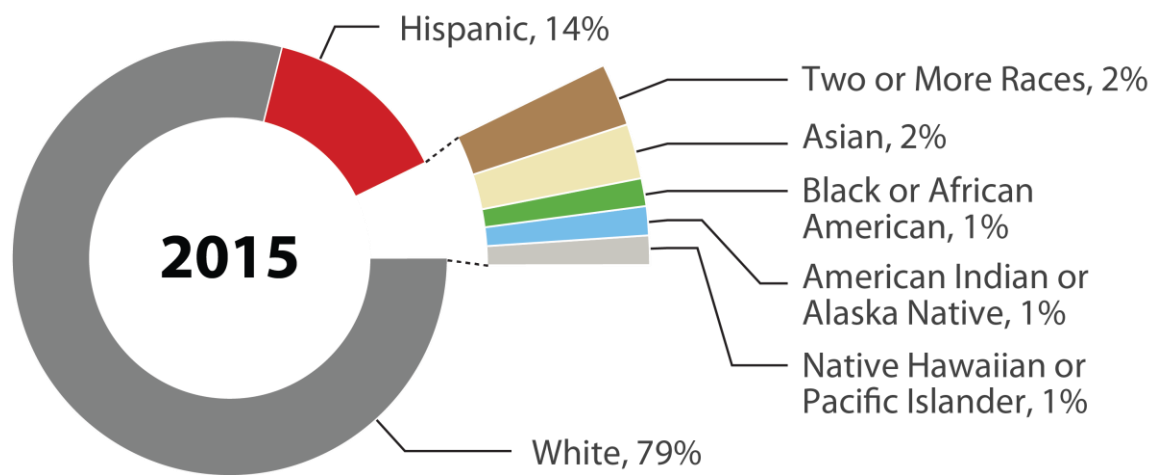


Equity, Diversity, and Inclusion Data

Newsmaker Breakfast
April 14, 2021



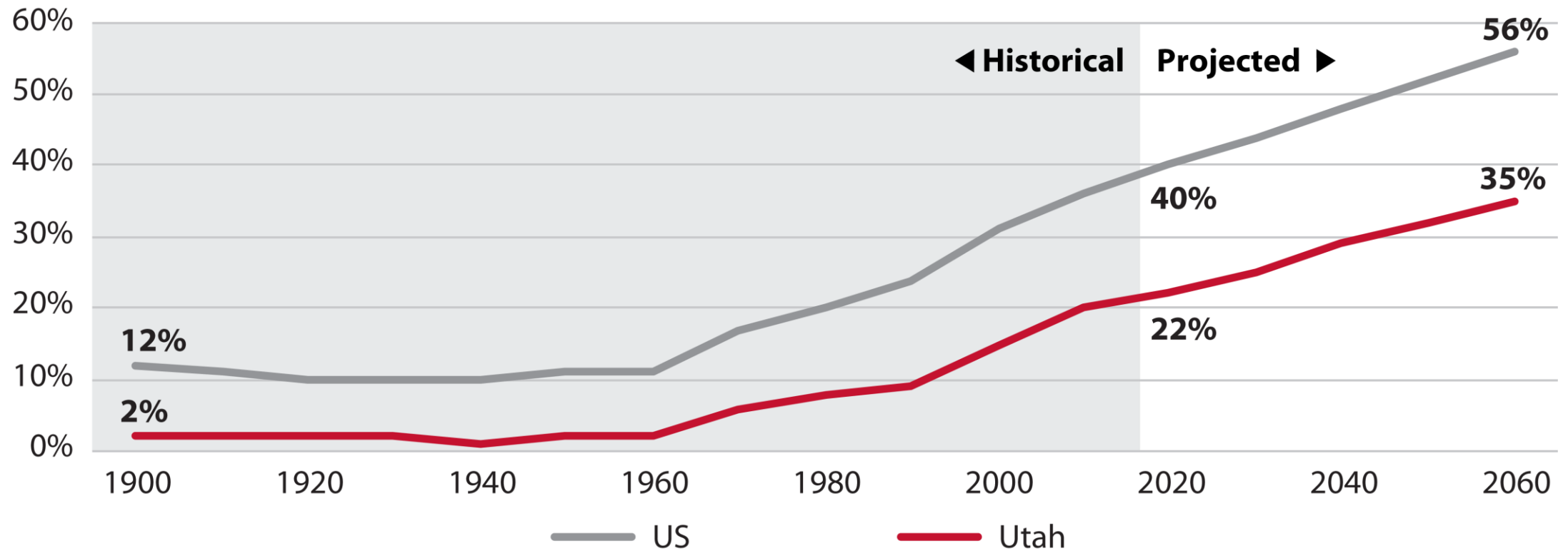
Utah Population Shares by Race/Ethnicity



Note: Individuals claiming Hispanic, Latino, or Spanish origin are categorized as Hispanic and can be of any race. Non-Hispanic persons can be classified as a single race alone—White, Black or African American, American Indian or Alaska Native, Asian, Native Hawaiian or Pacific Islander—or as two or more races.

Source: Kem C. Gardner Policy Institute

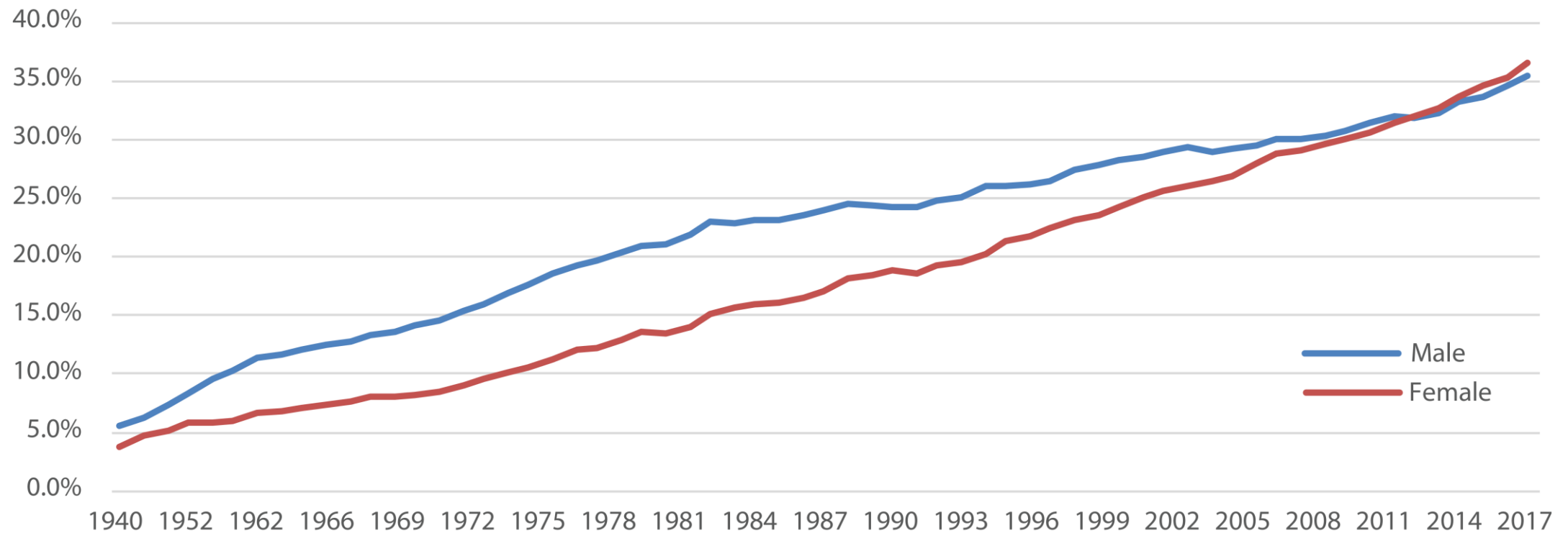
Minority Share of Population, Utah and U.S.



Note: Minority includes those identifying as something other than Non-Hispanic White Alone

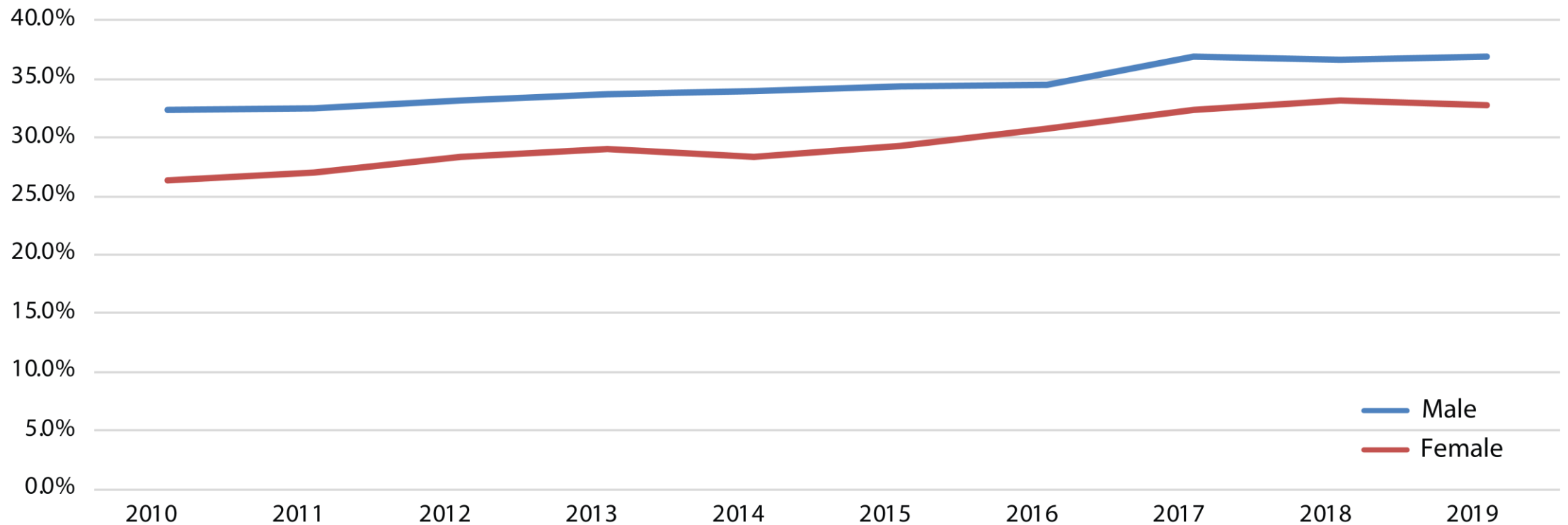
Source: U.S. Census Bureau; Perlich 2002; Kem C. Gardner Policy Institute

Percent of U.S. Adults 25+ with 4 Years of College or More by Gender



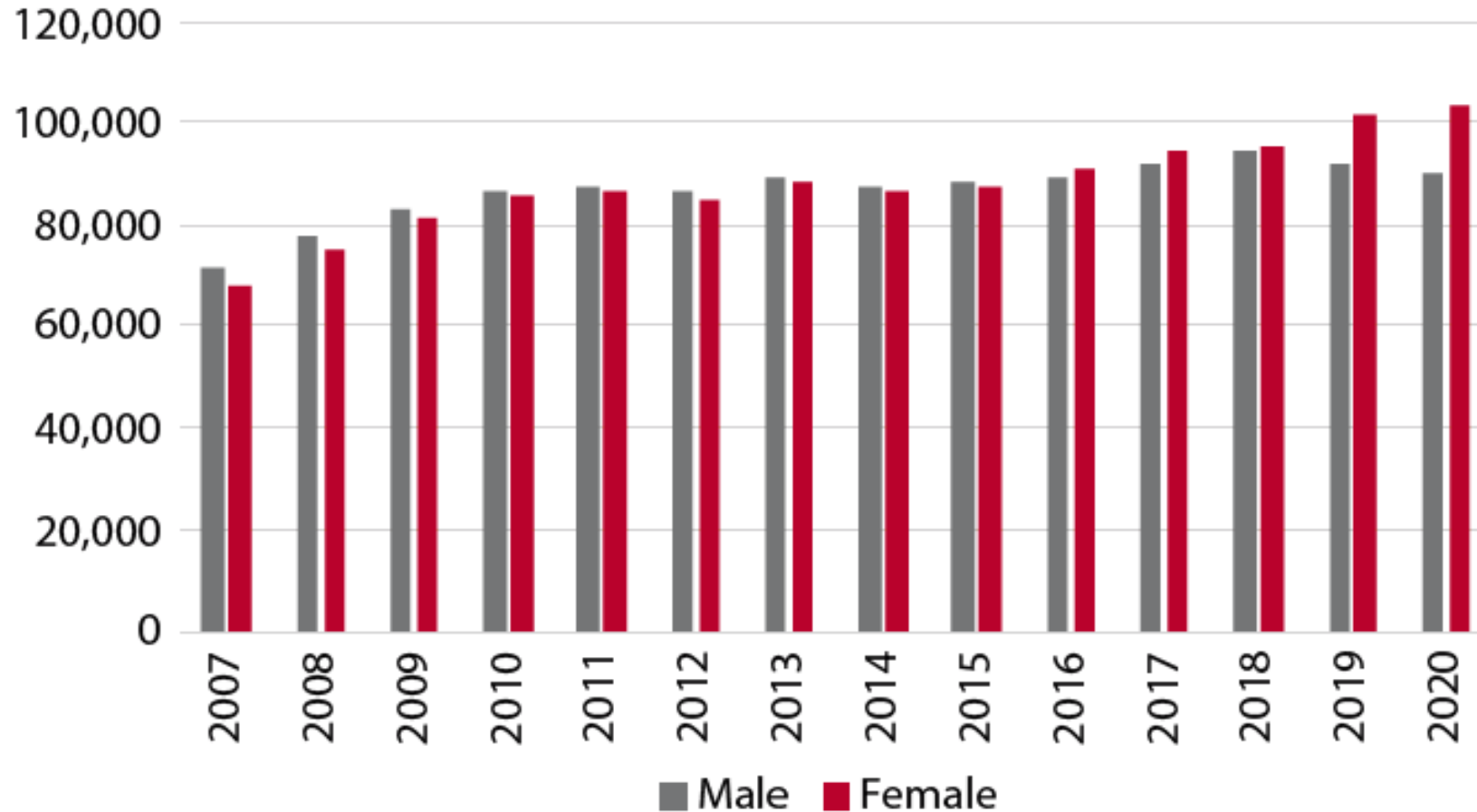
Source: U.S. Census Bureau Current Population Survey Historical Tables

Percent of Utah Adults Age 25+ with a Bachelor's Degree or Higher by Gender



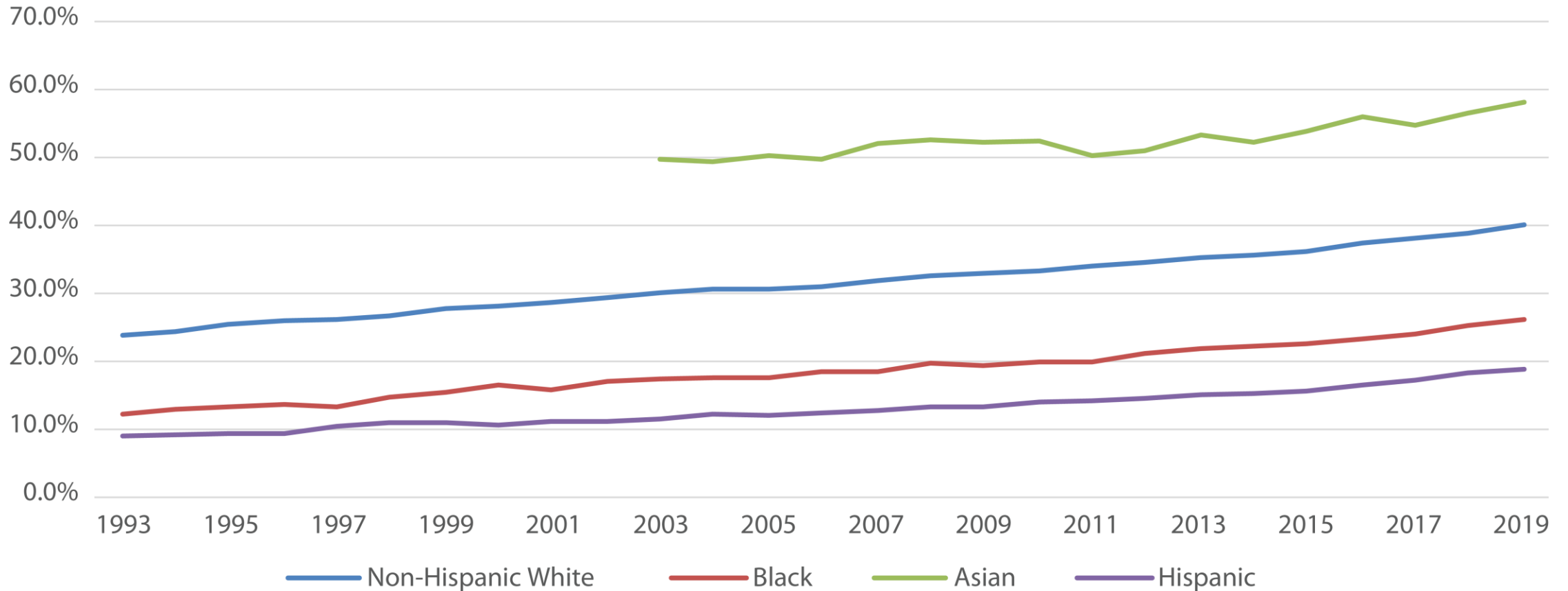
Source: U.S. Census Bureau American Community Survey 1-year Estimates

Utah Public Post-Secondary Degree-Granting Institution Enrollment by Gender



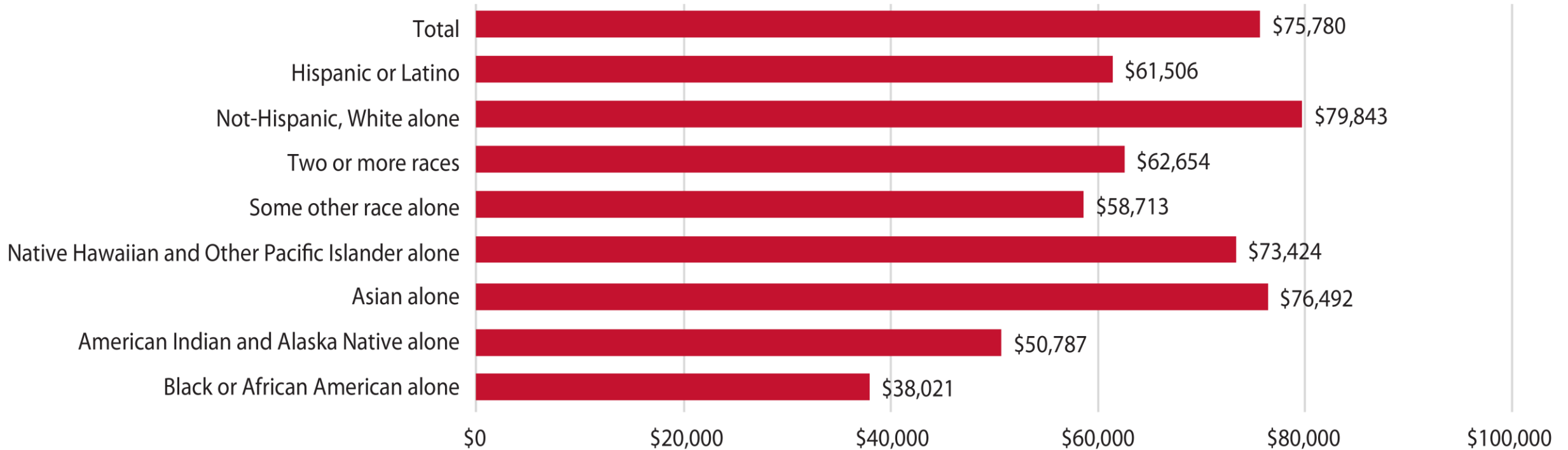
Source: Utah System of Higher Education

Percent of U.S. Adults 25+ with 4 Years of College or More by Race/Ethnicity



Source: U.S. Census Bureau Current Population Survey

Median Household Income in Utah by Race/Ethnicity, 2019



Source: U.S. Census Bureau, 2019 1-Year American Community Survey Estimates